

DESIGN BASIS REPORT-PUBLIC HEALTH ENGINEERING(PHE)

Sl. No	Title	Page No.
1	Public Health Engineering System Overview	
2	Water Supply System	
2.1	Design Methodology	
2.2	Water supply source & transfer (schematic diagram included)	
2.3	Internal water supply system (schematic diagram included)	
2.4	Internal Water Supply-Water demand	
2.5	Internal Water Supply- Water Storage tank details	
3	Pumps	
4	Material Specification - Water Supply	
5	Drainage System- Internal and External	
6	Sewage Treatment Plant	
7	Rainwater disposal & Storm water management system	
7.1	Rain Water Disposal-Terrace	
7.2	Rain Water Harvesting	
8	Material Specification – Drainage	
9	Sanitary Ware & CP fittings	
10	Design Calculations	
10.1	Occupancy details	
10.2	Water demand Calculations	
10.3	Water Storage Tank details	
11	Ventilation System- requirements for pump rooms, STP, kit & toilets	
12	Assumptions	
13	Exclusions	

**DESIGN BASIS REPORT
PHE**

Project Name

Rev.

1.0 Public Health Engineering System Overview

This section of the DBR describes the key PHE design criteria being envisaged for this project. The design intent of the PHE works provided for this development will be relevant to the project context in terms of local code compliance, build ability, easy operation and maintenance. The scope incorporates features to minimise usage of water, and appreciating re-usage of sewage treated water to reduce the water demand at source level.

The design of Public Health Engineering services shall cover the following systems.

- Water supply system.
- Pump sets.
- Drainage system
- Internal drainage system
- External drainage system
- Sewage treatment plant (STP)
- Sanitary ware and CP fittings.

	DESIGN BASIS REPORT	Project Name	Rev.
	PHE		

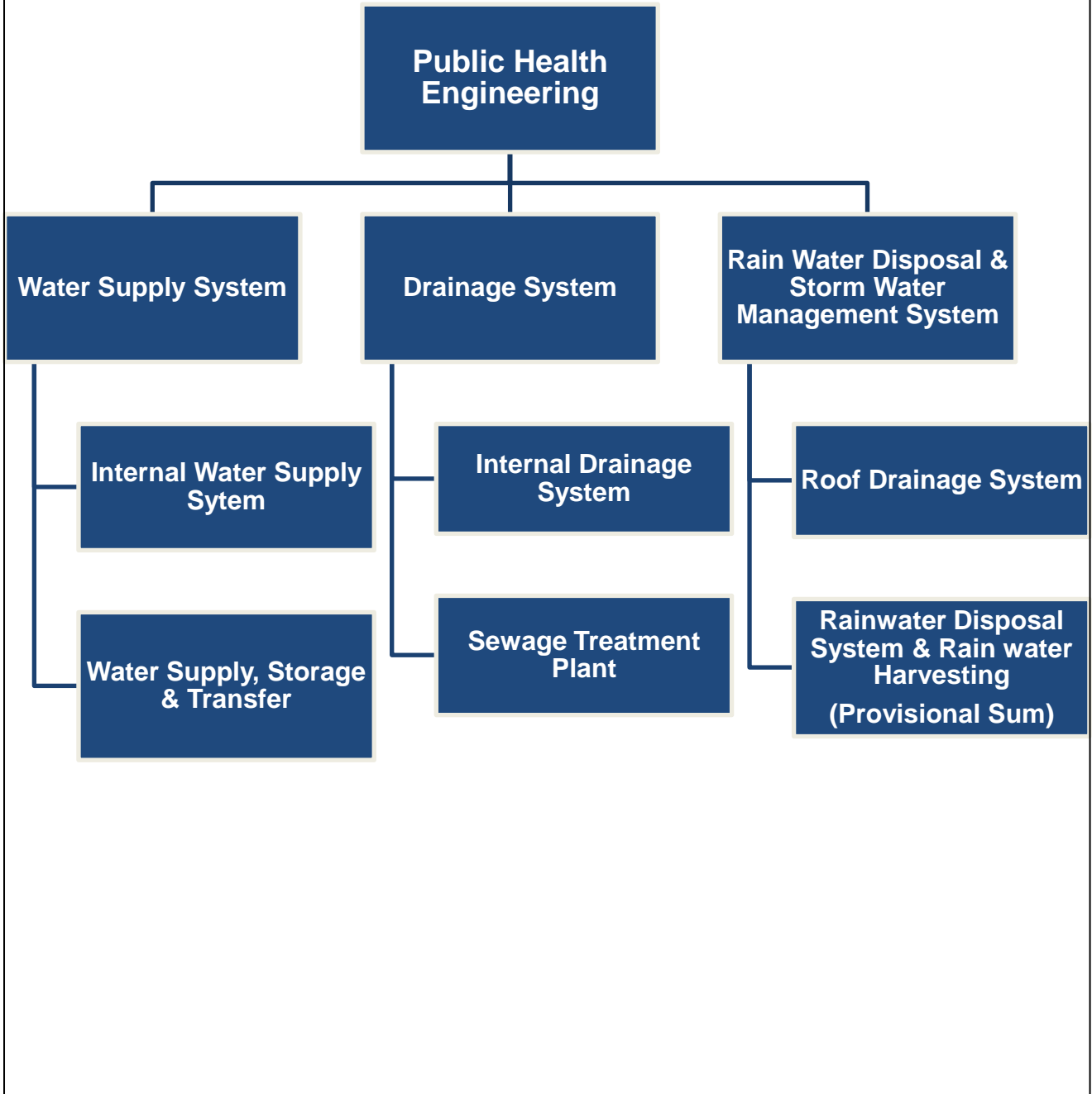


Fig 1 - Public Health Engineering- System Overview

	DESIGN BASIS REPORT	Project Name	Rev.
	PHE		